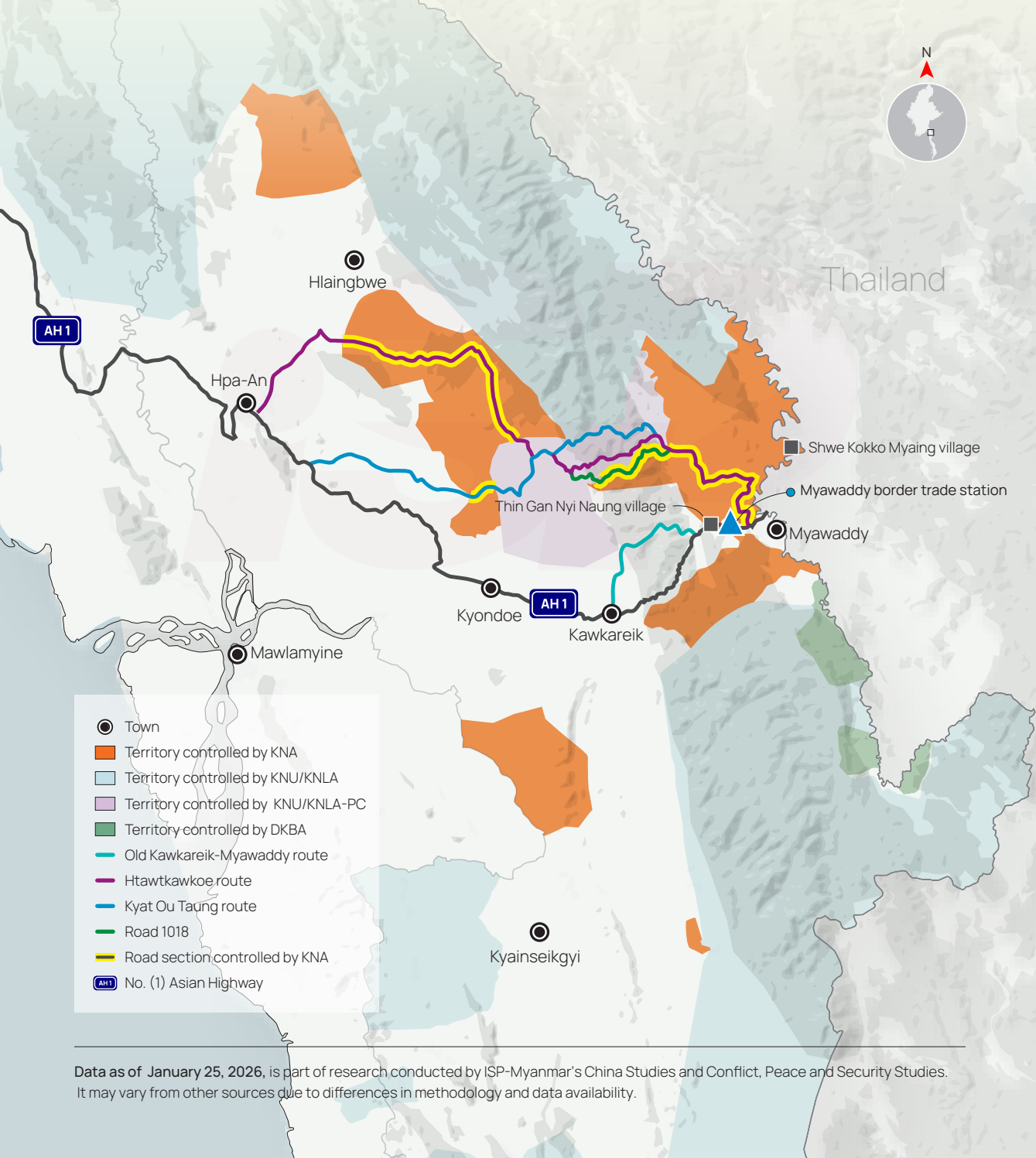


## KNA Controls Critical Border Trade Routes

The Karen National Army (KNA) controls sections of Karen State vital to Myanmar–Thailand border trade. Conversely, various other Karen armed groups control alternative paths—including the Htawtkawkoe, Kyat Ou Taung, and 1018 routes—that have substituted the primary No. (1) Asian Highway. The KNA has dispersed its forces across strategic positions in Myawaddy township, from Thin Gan Nyi Naung village to Shwe Kokko Myaing.



Data as of January 25, 2026, is part of research conducted by ISP-Myanmar’s China Studies and Conflict, Peace and Security Studies. It may vary from other sources due to differences in methodology and data availability.