



ISP Situation Brief Series 2025  
Conflict, Peace and Security Studies

SB2025-001 | July 21, 2025

# KNU NOW HOLDS ONE-THIRD OF MYANMAR-THAILAND BORDER

The Karen National Union (KNU) has expanded its control of the Myanmar–Thailand frontier, now controlling nearly 500 miles (800 km) of the 1,500 miles (2,416 km) long border.



## KNU now holds one-third of Myanmar-Thailand border

---

**F**ollowing the seizure of the strategically important Ukayit Hta military camp in Myawaddy Township, Karen State, the KNU holds a third of the Myanmar-Thailand border.<sup>1</sup> Situated near the border line, just 30 miles (48 km) from Myawaddy and directly opposite Thailand's Tak Province, Ukayit Hta camp was a linchpin in the junta's border security, now fallen to the joint forces of the KNU/KNLA and allied resistance groups. The KNU now controls nearly 500 miles (800 km) of the 1,500 miles (2,416 km) border.

Since the 2021 coup, the KNU's operations have increasingly focused on securing borderlands rather than advancing deeper into central Myanmar. Control of these frontier areas offers strategic advantages, including expanded territorial consolidation, improved access to resources, and greater influence over Myanmar-Thailand border trade routes and border security.

The capture of Ukayit Hta also reinforces the KNU's political clout, territorial control, and administrative reach in the long-running Karen revolution. The fall of the camp, located next to the Democratic Karen Buddhist Army (DKBA) headquarters, further reduces the DKBA's territory. The newly secured zone also opens a vital supply corridor for the KNU, facilitating the flow of critical resources, from food supplies to ammunition. Further attempts by the KNU to assert full control over remaining trade routes and military outposts along the border are likely to follow. ■

---

<sup>1</sup>

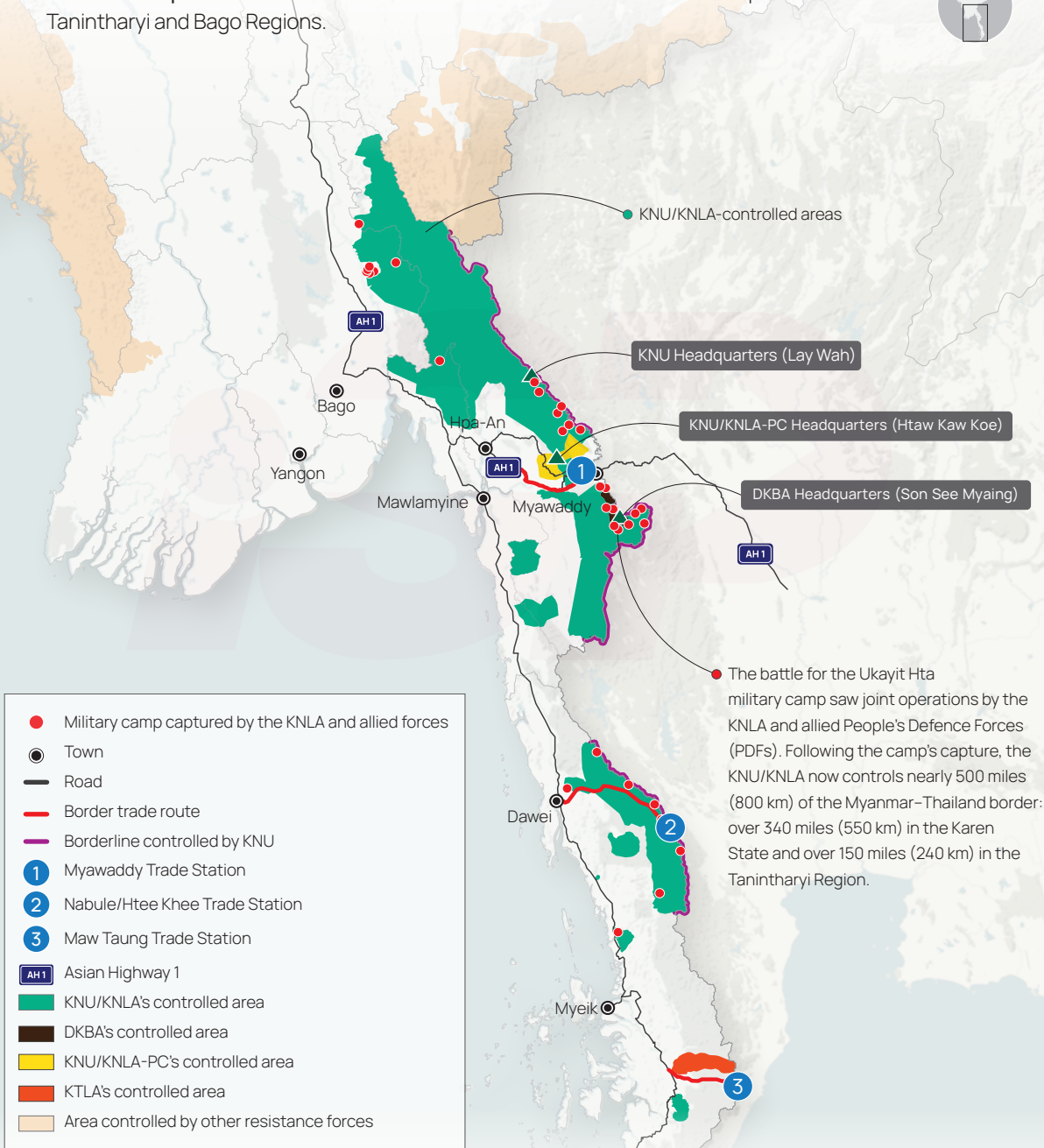
Data as of July 15, 2025.

This Situation Brief No. 1 (English Version) was published on July 21, 2025, as a translation of the original Burmese version published on July 18, 2025.

# KNU Controls 61 Percent of Karen State's Territory

ISP Mapping Number 105

Four years after Myanmar's military coup, the Karen National Union (KNU) and its armed wing, the Karen National Liberation Army (KNLA), have established control over an estimated **61 percent** of Karen State. Their influence has also extended into parts of the Tanintharyi and Bago Regions.



Data as of July 15, 2025. This is part of the research conducted by the ISP-Myanmar's Conflict, Peace, and Security Studies. It may vary from other sources due to differences in methodology and data availability.