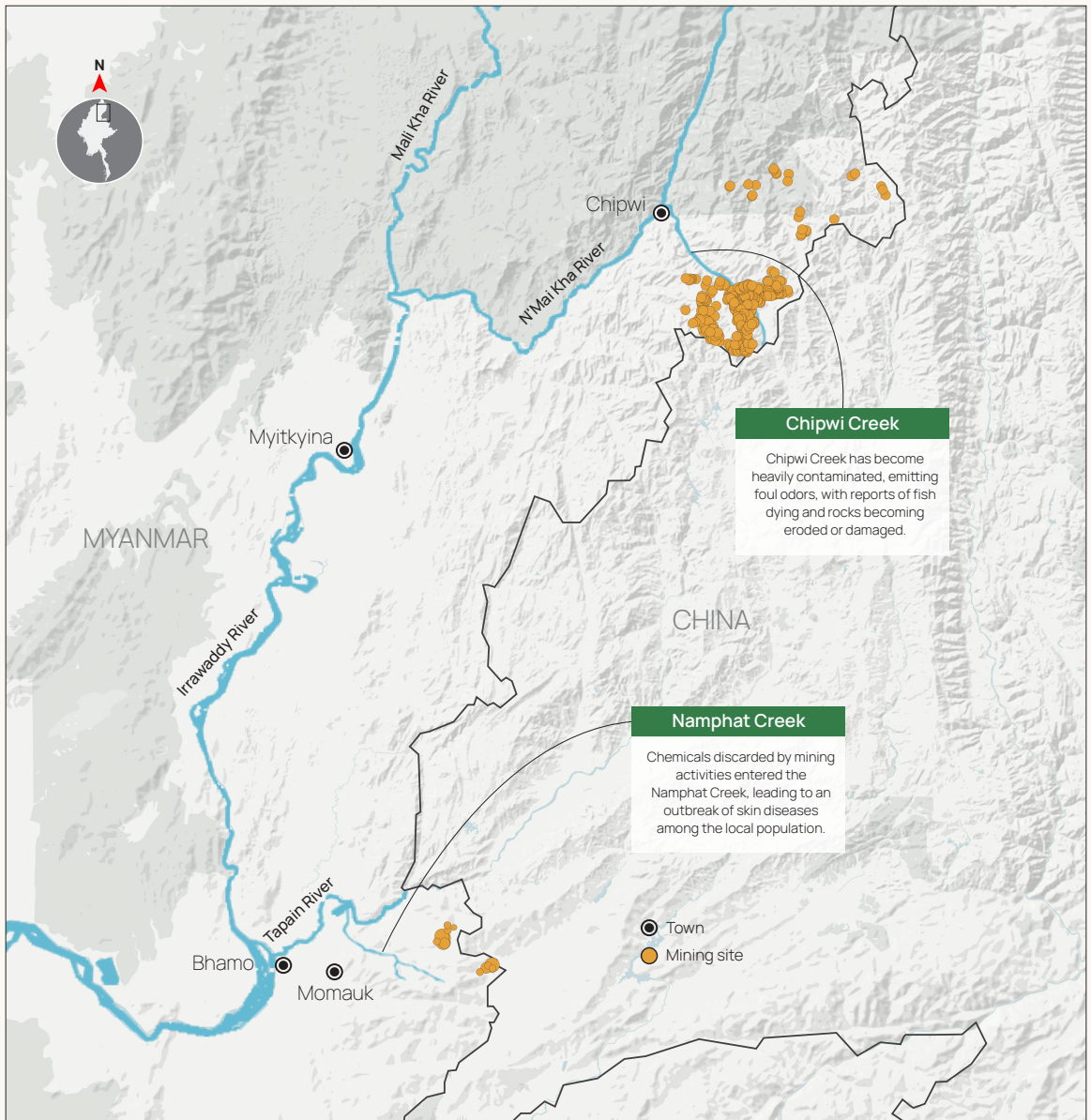


Threat of Rare Earth Mining Sites to the Local Waterways

Expansion of rare earth mining sites in Chipwi township threatens the local waterways including the N'Mai Kha river which flows into the important lifeline river of Myanmar, the Irrawaddy. Mining sites in Chipwi and Momauk townships are situated approximately 10 - 15 miles from the important local waterways.



Data is based on ISP Myanmar's research and may vary from other sources due to differences in methodology and data availability.