



ISP Situation Brief Series 2025  
Conflict, Peace and Security Studies

SB2025-05 | November 13, 2025

# REGIME REGAINS 11 PERCENT OF LOST GROUND IN NORTHERN SHAN

The State Security and Peace Commission (SSPC) has regained control of 44.4 percent of the Mandalay–Muse trade route. However, the regime has so far reclaimed only about 11.3 percent—roughly 3,120 square miles (8,081 square kilometers)—of the northern Shan State territory lost after Operation 1027.



## Regime Regains 11 Percent of Lost Ground in Northern Shan

---

On October 27, 2025, the State Security and Peace Commission (SSPC) recaptured Hsipaw, a town previously held by the Ta'ang National Liberation Army (TNLA)—bringing the regime's control over the Mandalay–Muse trade route to **44.4 percent**. Following Operation 1027, the regime had lost **about 58.3 percent**—27,611 square miles (71,512 square kilometers)—of Northern Shan territory. However, it has since regained **11.3 percent** of that loss.

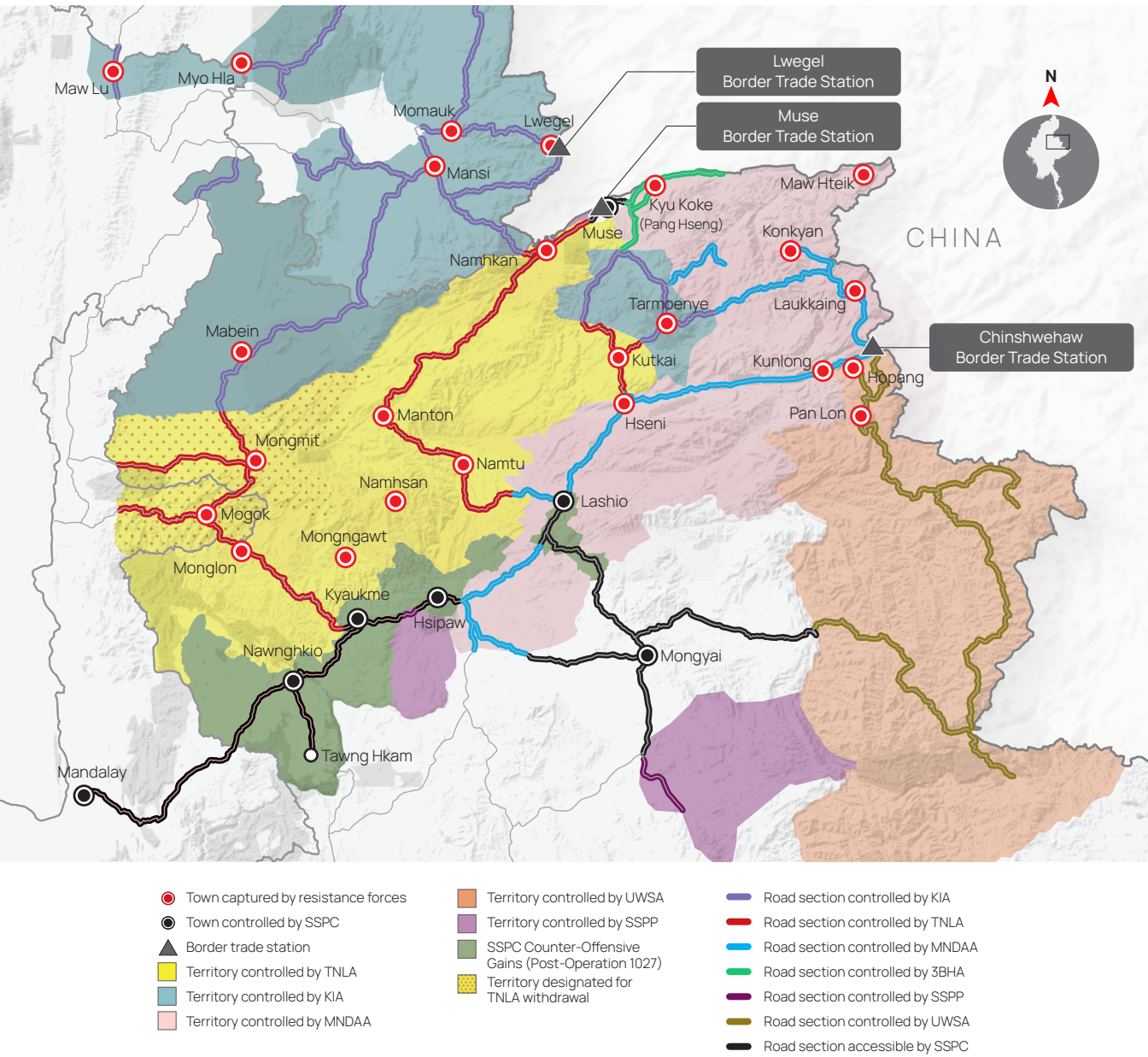
Following China's intervention in April 2025, the regime also regained control of Lashio, previously held by the Myanmar National Democratic Alliance Army (MNDAA). From there, it launched a series of offensives targeting TNLA-held towns, capturing Nawngkhio in June after 45 days of fighting; Kyaukme on September 30 after a 21-day assault; and Hsipaw on October 16, following a 16-day push that began on October 1. However, a stretch of the Pyidaungsu Highway connecting Hsipaw and Lashio remains under MNDAA control. The TNLA has since announced a ceasefire with the junta and agreed to withdraw from Mogok and Mongmit.

Despite the limited gains, the territories recaptured by the regime are primarily urban centers critical to Myanmar–China border trade. While the SSPC now controls the towns and urban areas, Ethnic Armed Organizations (EOs) continue to control the majority of the surrounding rural and mountainous areas (see [ISP Mapping No. 116](#)). The regime is attempting to restore administrative structures and public services. However, in the rural areas, both the regime and the EOs are competing to run parallel administrations. ■

# ● Regime Now Regains 44.4 Percent of the Mandalay–Muse Corridor

ISP-M2025-116

Following China's intervention in April 2025, the State Security and Peace Commission (SSPC) regained control of Lashio. On June 15, 2025, it launched a counter-offensive on Nawngkhio, a town earlier seized by the Ta'ang National Liberation Army (TNLA). After roughly four months of clashes, the SSPC re-established control over Nawngkhio, Kyaukme, and Hsipaw. In total, the regime has reclaimed about 11.3 percent of the total territory it lost in northern Shan State, securing control over 44.4 percent of the Mandalay–Muse trade route.



Data as of November 11, 2025, is part of research conducted by ISP-Myanmar's Conflict, Peace and Security Studies. It may vary from other sources due to differences in methodology and data availability.